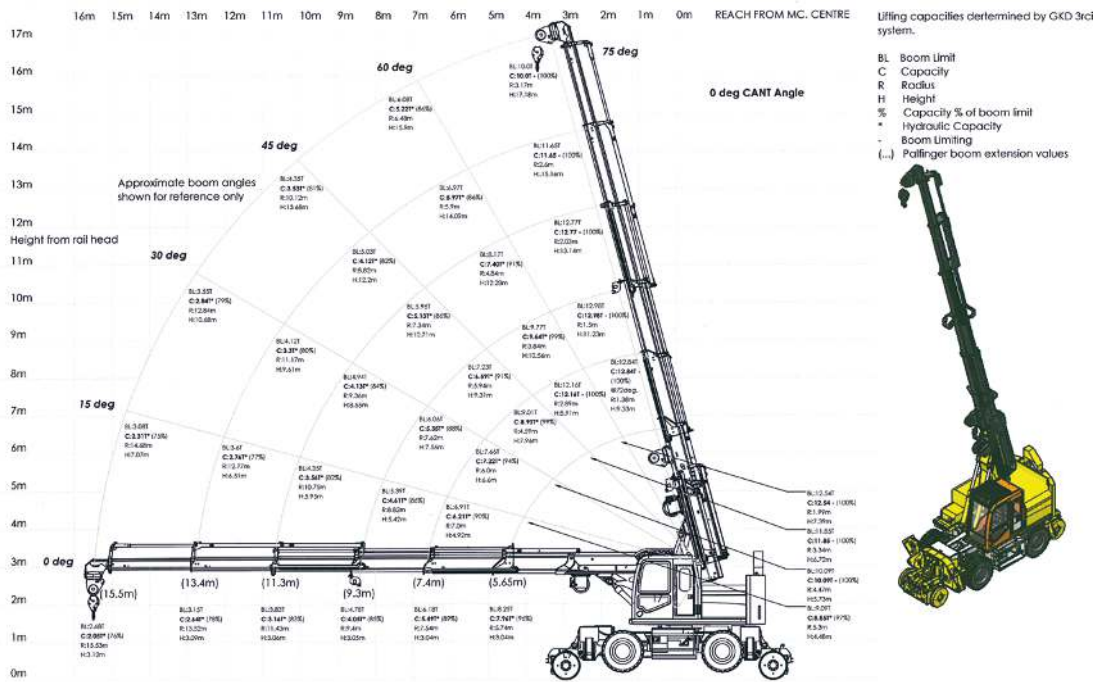




Doosan DX270 Ultimate Crane

The Doosan Ultimate Crane is the ultimate in lifting abilities based on an RRV 360 platform. Developed by GOS engineering this machine is the only RRV crane that has outrigger capability for heavy over the side lifting. It is also approved for ALO working.

With a 15.5m telescopic boom and in gauge maximum lift of up to 12 tonne this machine can place virtually any structure in or around the track. Highly impressive over the side lifting capabilities mean this crane can alleviate the need for tandem lifting or rail based cranes to place structures such as REB's lineside. This offers massive cost savings to your project as well as the environmental advantages of not running additional machines. This machine runs on the most environmentally friendly tier 4 engines.



Specifications

- Based upon Doosan model DX170CR
- RIS 1530 Issue 6 compliant
- LUL Spec
- High Integrity ALO approved
- Hydrostatic drive.
- Stabiliser legs at each corner of the machine to provide additional stability in operation all of which can be deployed & retracted independently of each other.
- Stabilisers when deployed land beyond the sleeper ends thus avoiding any sleeper loading concerns.
- Stage IV engine providing increased power, torque & fuel economy.
- AdBlue/DEF system for improved emissions.
- Twin Cab
- Self-levelling operation – The self-levelling operation allows the machine to perform at its optimum capacity allowing the Palfinger crane boom to remain essentially perpendicular to the horizon irrespective of the rail cant & thus preventing side boom load.
- Crane block anti-collision system

Approx. weight	32900kg
Maximum working gradient	1 in 29
Max working cant	150mm
Max travelling cant	200mm
Max towing speed	5mph
Hydraulic Park Brake release pressure	30-100 bar
Air Park Brake	4.0 – 6.0 bar
Hydraulic Service Brake	0-100 bar
Air Service Brake	0-6 bar
Noise level (Operator position)	95dB
Noise level (passenger position)	64dB
Max reach	15.5m
Max height	17.0m
Max capacity	12.98 tonnes (at a radius of 1.8m & height of 11.23m)

General Enquiries
0118 9774 901
info@readypower.co.uk

Head of Operations North
Dale Bottom
07971 213434
DaleB@readypower.co.uk

Head of Operations South
Jason Easton
07974987148
Jason.easton@readypower.co.uk

Senior Commercial Manager
James Stanford
07854 561229
JamesS@readypower.co.uk

Readypower Rail Services Ltd
620 Wharfedale Road
Winnersh, Reading
Berkshire
RG41 5TP